

CERTIFICATE OF LOCATION OF GOVERNMENT CORNER

NORTH QUARTER Corner of Section 27, Township 107N, Range 39W

5th Principal Meridian, State of Minnesota, County of MURRAY

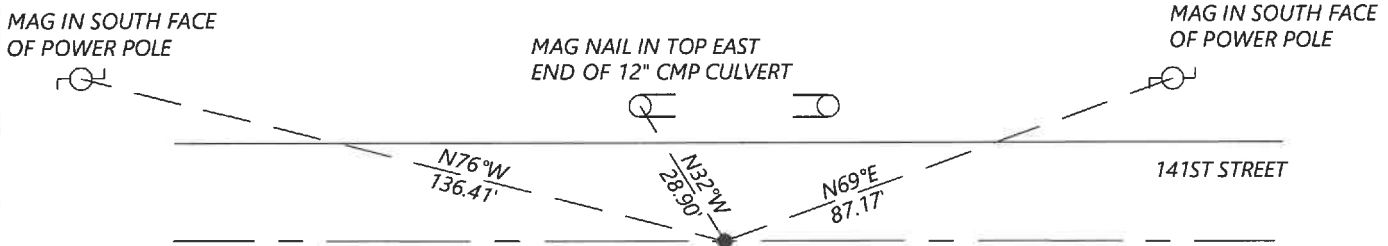
At the corner location shown on the sketch:

On 8/27/2020 found a NO.5 REBAR WITHOUT CAP 0.2' BELOW GRADE
DATE

left monument as found lowered monument removed monument (explain)

On _____ placed a _____
DATE

SKETCH OF REFERENCE TIES



N.T.S.

Statement of evidence for this corner location is on back of this page.

I hereby certify that this document was researched and prepared by me or under my direct supervision and that I am a licensed Land Surveyor under the laws of the State of Minnesota.

Signature [Handwritten Signature]

Date 6/16/2021 License No. 45874

Title:

- Land Surveyor Professional Engineer
- County Surveyor County Engineer

OFFICE OF THE COUNTY RECORDER

County of Murray

I hereby certify that this document was filed in the Co.

Recorder's office at _____ M. on the _____ day of _____ A.D. 20 _____

County Recorder Karen Brown
by JUN 22 2021, Deputy

DOCUMENT NO. _____

*JASON LATZKE
Minnesota License No. 45874*

Statement of Evidence:

North Quarter Corner of Section 27, Township 107 North, Range 39 West, 5th Principal Meridian, Murray County, Minnesota.

- July 1861 GLO notes: Set post in mound*
- April 1901 Survey record for Section 27 shows they located a stone 2.5' below gravel surface.*
- 1977 Record shows an iron pin and N&C in power pole NW 32.50', N&C Ash tree NE 72.83'.*
- June 2012 Highway Department records show a $\frac{1}{2}$ " steel pin at the corner of the following coordinates listed:
N: 174068315 E: 566818.55*
- Sept. 2020 Westwood Professional Services searched and found a No.5 rebar at the corner. The coordinated
fit well with the 2012 Highway Department records. I accepted the found monument and set
reference ties.*

Analysis of the recovered data, field evidence and survey measurements, indicates that the monument found is the correct perpetuation of this corner. For additional information concerning this corner please contact Westwood Professional Services.